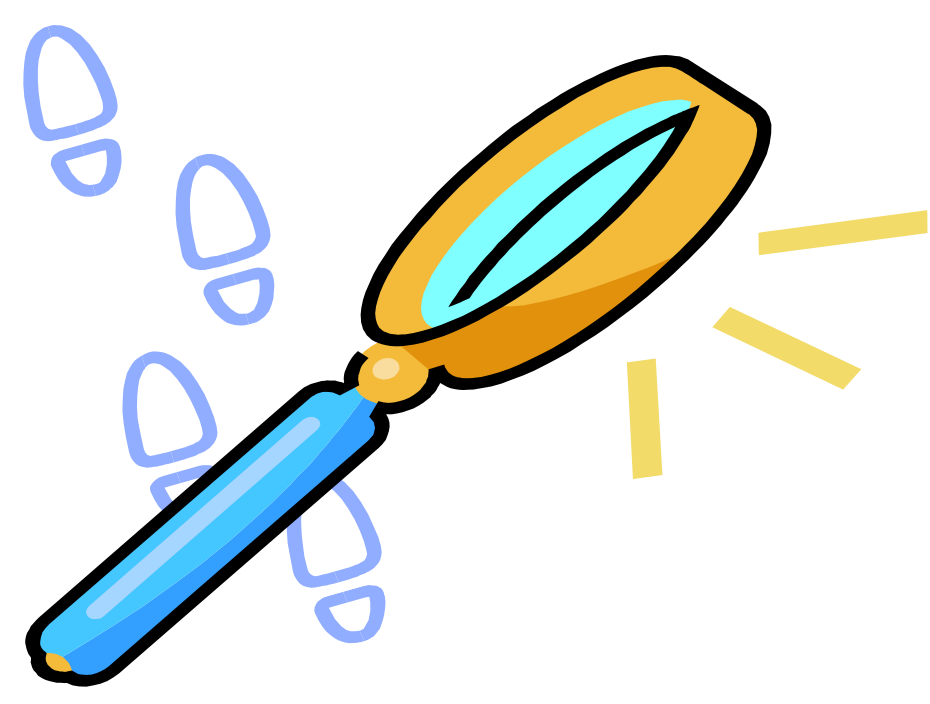


Tracking the "Elusive" E-resource

Audrey Jackson and Marion Peters
UCLA Science & Engineering Library
ajackson@library.ucla.edu



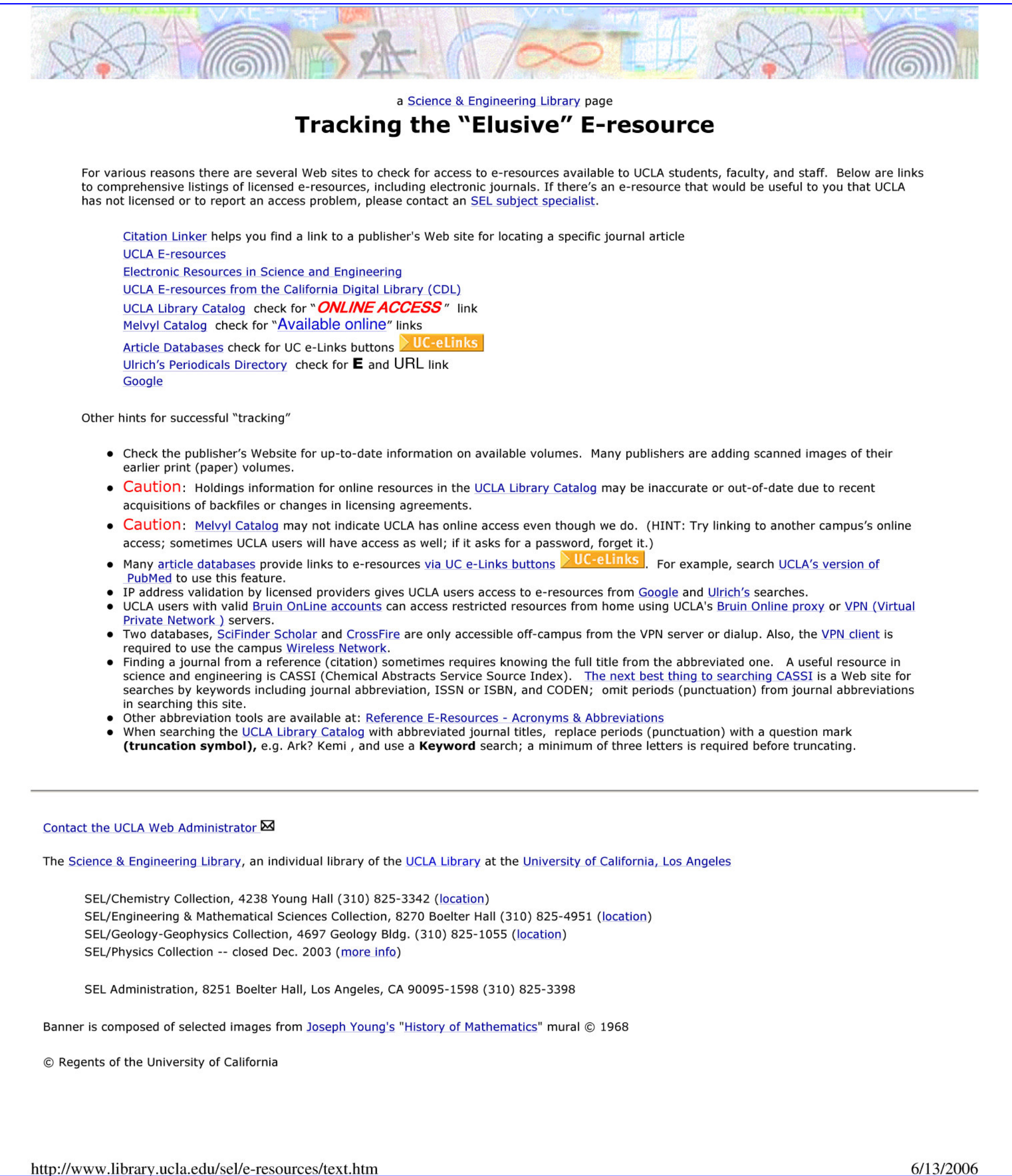
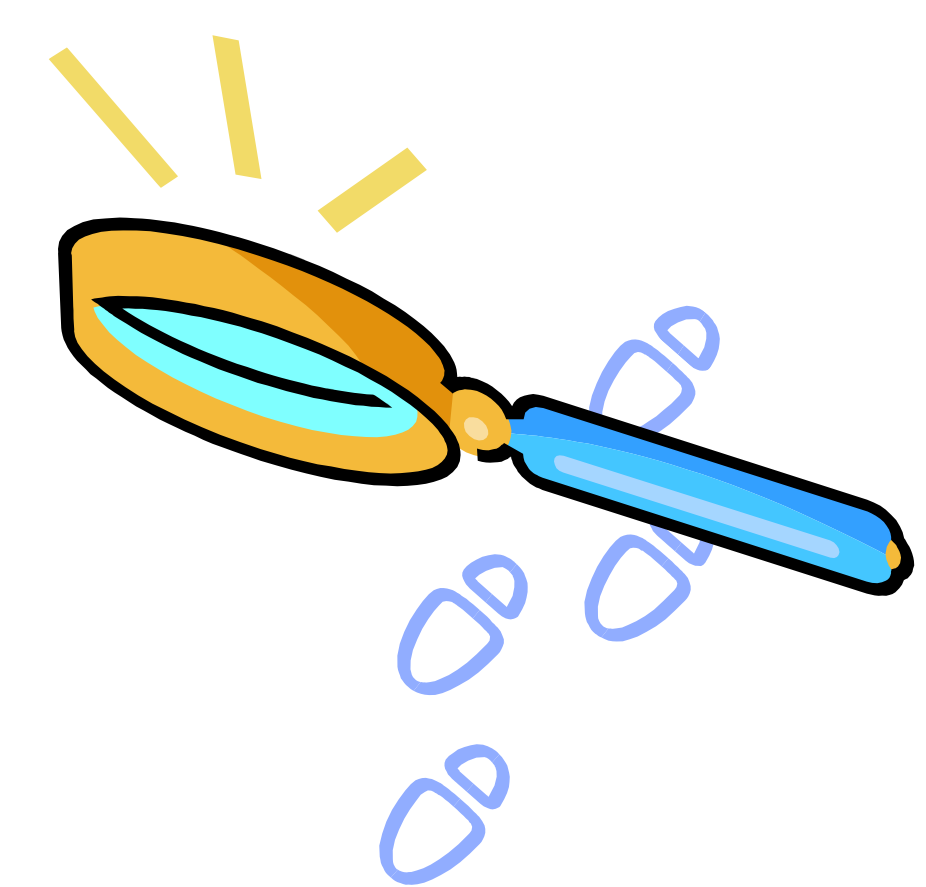
E-resources...
The Library licenses them.
How do our users find them?

ASK!

Email Survey to Three Departments
Bioengineering
Electrical Engineering
Chemistry & Biochemistry

E-resources Webpage

A) Text Design
<http://www.library.ucla.edu/sel/e-resources/text.htm>



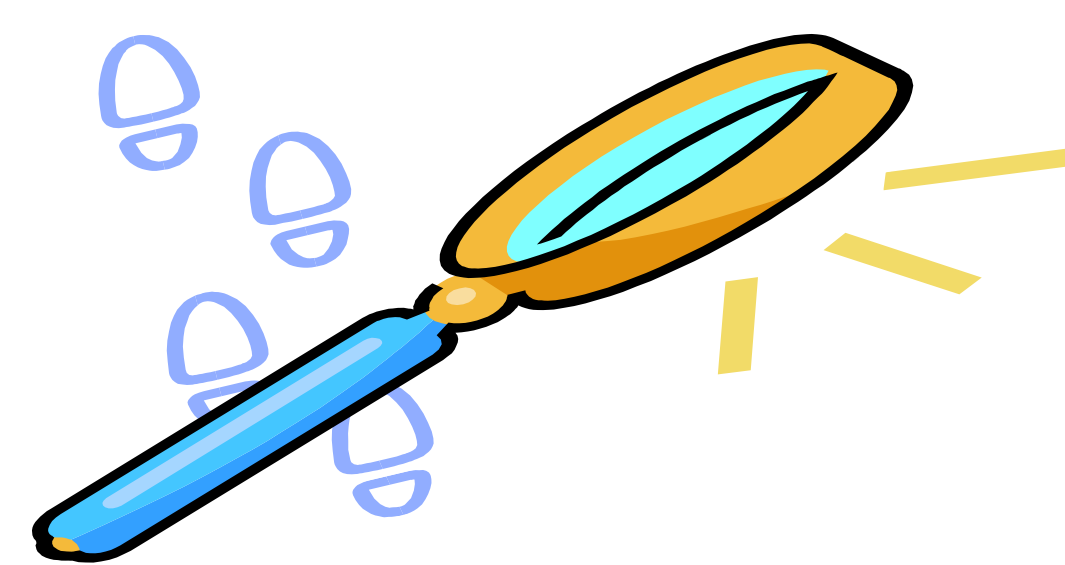
B) Graphics Design
(after survey)
<http://www.library.ucla.edu/sel/e-resources>

ELECTRICAL ENGINEERING/BIOENGINEERING			
1 In general electronics access is sufficient, if a print copy of the journal is also available			
	AGREE	DISAGREE	
a) in a Science & Engineering Library location	16	7	
b) at the Biomedical Library	15	5	
c) at any campus library	10	12	
d) at SRLF	7	13	
e) at another UC library	7	13	
TOTALS	55	50	
2. For journals with electronic access, the library should have :			
	AGREE	DISAGREE	
a)only electronic access	12	9	
b) most recent year in print	5	15	
c) most recent 5 years in print	4	16	
d) most recent 10 years in print	0	18	
e) all years in print	2	16	
TOTALS	23	76	
3. With regard to decisions on retaining of discontinuing journals, I would like to be consulted about:			
	AGREE	DISAGREE	
a) each journal	8	16	
b) specific journals (please list in comments)	0	0	
c) general guidelines regarding journals are sufficient	15	3	
TOTALS	23	19	
4. To determine whether or not UCLA has access to an electronic journal, I prefer to search:			
	AGREE	DISAGREE	
a) Eresources in Science & Engineering	10	12	
b) UCLA Eresources	9	10	
c) Directory of CDL Licensed Content	6	12	
d) UCLA Library Catalog "ONLINE ACCESS" link	17	2	
e) Melvyl Catalog "Available Online" link	11	9	
f) Google	7	10	
g) other sites (specify)	1	1	
TOTALS	61	56	

CHEMISTRY/BIOCHEMISTRY			
1 In general electronics access is sufficient, if a print copy of the journal is also available			
	AGREE	DISAGREE	
a) in a Science & Engineering Library location	21	1	
b) at the Biomedical Library	19	2	
c) at any campus library	16	5	
d) at SRLF	13	8	
e) at another UC library	13	9	
TOTALS	82	25	
2. For journals with electronic access, the library should have :			
	AGREE	DISAGREE	
a)only electronic access	8	14	
b) most recent year in print	5	16	
c) most recent 5 years in print	4	15	
d) most recent 10 years in print	3	16	
e) all years in print	6	13	
TOTALS	23	76	
3. With regard to decisions on retaining of discontinuing journals, I would like to be consulted about:			
	AGREE	DISAGREE	
a) each journal	12	10	
b) specific journals (please list in comments)	2	1	
c) general guidelines regarding journals are sufficient	9	11	
TOTALS	23	22	
4. To determine whether or not UCLA has access to an electronic journal, I prefer to search:			
	AGREE	DISAGREE	
a) Eresources in Science & Engineering	10	5	
b) UCLA Eresources	10	5	
c) Directory of CDL Licensed Content	4	12	
d) UCLA Library Catalog "ONLINE ACCESS" link	7	9	
e) Melvyl Catalog "Available Online" link	7	8	
f)Google	8	8	
g) other sites (specify)	0	0	
TOTALS	46	47	



C) Use Statistics



2005-06	TEXT	GRAPHICS
Apr	675	
May	302	
June	746	
July	323	2,163
Aug	48	4,625
Sept	36	3,653
Oct	73	3,420
Nov	67	1,913
Dec	66	2,711
Jan	49	4,741
Feb	56	4,192
Mar	126	3,156
Apr	132	3,382
May	108	4,496
TOTALS	2,807	38,452