



# Engineering Libraries Division Newsletter

## March 2012

### Message from the Chair

Michael White

#### Inside this issue:

Conference Program Update	3
Committee Reports Nominating Committee ELD Membership Directory	6
People & Places	7
Lightning Talks	9



Greetings from Kingston, Ontario. What a weird winter it's been! Lake Ontario has been ice-free all season and what little snow we've had hasn't stuck around for very long. The Great White North is looking more like the Great Brown North, at least in eastern Ontario. But spring is on the way, and with it library conference season.

#### **ASEE Conference in San Antonio, June 10-13, 2012**

Doug McGee and the Program Planning Committee are putting the finishing touches on the ELD program for San Antonio. Please see Doug's update below for all the details. There will be several technical sessions, a poster session, a panel session, business meetings, more lightning talks and many social activities. This year ASEE has made several changes to the conference schedule, the most significant being the replacement of the ASEE Picnic on Sunday with a Division Mixer followed by a Welcome Reception in the Exhibit Hall. I'm sure it will be another informative and exciting conference.

#### **ASEE Constitutional Changes**

In an editorial in the December 2011 issue of PRISM, ASEE President Don P. Giddens announced that the Board of Directors intends to seek membership approval for several amendments to the ASEE Constitution. Chief among the proposed changes is removing the cap on individual membership dues, which was set at \$70 in 1992. (Current dues are \$69.) The Board of Directors would retain the power to set dues annually. The ASEE budget is under increasing pressure due in part to inflation and declining membership. ASEE dues are low compared to other professional societies, so an increase is probably overdue. The other amendments deal with qualifications for the vice president of external relations, Professional Interest Council chair terms of office and language changes. More information will be forthcoming, so watch your e-mail and mail.

#### **ELD Task Forces Update**

The Task Force on Virtual Conference Participation has discussed and is gathering information on various options for virtual participation including real-time webcasts of the sessions, presenters speaking from remote locations (with the main speaker at the conference), and archived webcasts of sessions. Members of the task force have recently begun to explore these options with ASEE staff. (Submitted by Megan Tomeo and Patricia Kirkwood.)

The Information Literacy Wiki Task Force has been discussing what content to



ELD is a division of the American Society for Engineering Education. Its mission is "to promote and strengthen the role of the library as an integral part of engineering education."

<http://depts.washington.edu/englib/eld>

## Message from the Chair *(Continued from page 1)*

update on the wiki, whether it is feasible to think about migrating content to platforms such as LibGuides, and how to market the wiki for its increased usage by ELD members. At present, the task force is of the opinion that the present wiki has some good content but needs to be updated to keep current as newer instructional materials have been created across engineering institutions. Members are currently searching for relevant handout and information literacy tutorials to be included in the wiki, and are developing a plan to keep the information updated. (Submitted by Jay Bhatt.)

### **ELD Member Questionnaire**

ELD Archivists Paige Gibbs and Cecilia Mullen have created an online questionnaire to collect information on ELD history and member activities. As a fan of organizational histories (which may have something to do with my undergraduate degree in history), I would like to encourage everyone to take a few minutes to complete the questionnaire, which is located at <https://catalyst.uw.edu/webq/survey/julesck/151553>.

### **ELD and ASEE 2012 Elections**

Bob Heyer-Gray, Beth Brin and Linda Whang (Nominating Committee) have assembled a slate of outstanding candidates for the positions of Secretary/Treasurer and Director. The ballot and candidate bios are available at <http://gemini.lib.purdue.edu/ELDvoting/>. Voting began on March 8 and will continue through midnight on March 23. Please take a few minutes to read about our colleagues who are running for office and cast your ballot.

ASEE national elections are also underway and all members should have received their ballots by March 1. If you haven't received your election information yet, you can read the candidates' statements online at <https://www.asee.org/about-us/the-organization/our-board-of-directors/2012-national-elections>. Ballots must be postmarked by March 31 in order to be counted.

### **Committee Chair Appointments/Reappointments**

Following the ELD elections, chairs of committees will be appointed or reappointed. The following committee chairs must be filled or renewed in 2012.

- Development
- Membership
- Publications
- Webmaster

If you are interested in chairing one of these committees or renewing for another term, please send me an email briefly describing your interest by March 31. I will then consult with the Executive Committee to make the appointments. ELD officers and committee chairs are expected to attend the Extended Executive Committee meeting, which is tentatively scheduled for Wednesday, June 13, so please make your travel plans accordingly.

If you have any questions, suggestions, or ideas about activities of interest to ELD, please contact me at [michael.white@queensu.ca](mailto:michael.white@queensu.ca).

I hope everyone has a great spring and I look forward to seeing you all in San Antonio in June!

Michael White  
ELD Chair  
[michael.white@queensu.ca](mailto:michael.white@queensu.ca)

## Conference Program Update for San Antonio, 2012

### Conference Program Update

Have those travel plans lined up yet? We are a mere three months away from the 119th ASEE Conference & Exposition in beautiful San Antonio, Texas. The ELD program is coming into focus with some new twists. This year, we have 12 papers in the final stage of the review process. I would like to take this opportunity to say “thank you” to all the authors, reviewers, our panel coordinator and panel speakers, and our many volunteers for this year’s activities.

Here is the official schedule of ELD business meetings and technical sessions as of March 16:

#### *Monday, June 11*

*12:30pm ELD Lightning Talks*

*2:15 Orienting Students for Lifelong Learning Success*

*4:30 Considerations for the Collections Conscious Librarian*

*6:30 ELD Welcome Reception*

#### *Tuesday, June 12*

*8:45am ELD Business Meeting*

*4:00pm Information Literacy in Context: Enabling Real World Problem Solving*

*6:00 ELD Banquet*

#### *Wednesday, June 13*

*8:45am Panel Discussion – Mobile Strategies for Engineering Libraries*

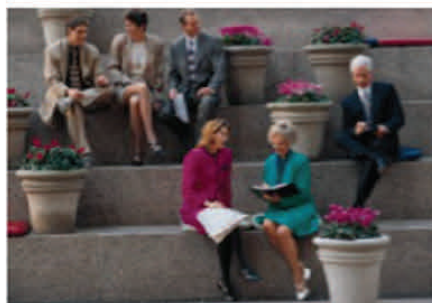
*12:30pm ELD Special Topics Session*

*2:15pm Extended Executive Committee Meeting*

The panel session on Wednesday is coordinated by Susan Boyd and will discuss how engineering libraries are planning and implementing mobile device applications into their suite of services. The panel members are Carol Brach, Engineering Librarian at the University of Notre Dame, Mike Wilson, Engineering & Physical Sciences Librarian at the University of Louisville,

## Conference Buddy Program

Brought to you by the ELD Mentoring Committee  
Jay Bhatt, Chair



Contact Bruce Neville

Email: [bneville@tamu.edu](mailto:bneville@tamu.edu)

Phone: 1.979.845.7572

Are you new to the Engineering  
Libraries Division?

Attending your first ASEE Annual  
Conference?

Get paired up with an ELD Member to  
show you the conference ropes.



## Conference Program Update for San Antonio, 2012

(continued from page 3)

and, joining us remotely, Jason Casden, Digital Technologies Development Librarian at North Carolina State University.

The complete preliminary program is available on the ELD website. Paper titles and author information will be posted by March 30.

### **Annual Business Meeting**

The ELD business meeting, chaired by Michael White, will be on Tuesday, June 12 at 8:45am. Officers, committee chairs and members are encouraged to send agenda items to Mike as soon as possible. The meeting will include breakfast, details to be announced soon. The annual meeting is open to all ELD members. Committee chairs and officers will present their updated reports and other division business will be discussed.

### **Extended Executive Committee Meeting**

The EEC will meet at 2:15pm on Wednesday, June 13. The EEC consists of all elected officers (the Executive Committee), the immediate past chair, and all individuals appointed to positions within ELD. The EEC meeting will be chaired by Program Chair/Chair-Elect Doug McGee and incoming Program Chair Adriana Popescu. The purpose of the meeting is to discuss any issues that arise during the conference and to begin planning for the 2013 conference in Atlanta.

### **Committee Meetings**

There is no designated time for committee meetings this year. Committee chairs are responsible for meeting with their members during the conference. Possible times for committee meetings include the NSF Poster Grantees session on Monday, 10:30-12:15, ASEE Exhibits and Poster session on Tuesday, 10:30-2:00 and the Distinguished Lecture sessions on Tuesday and Wednesday, 10:30-12:15.

### **NSF Awardees Poster Session SWAT team**

Something new this year. While we do not have any technical sessions planned for e-science or data curation, ELD will attempt a different activity. A team of your colleagues is developing a plan to survey this group of NSF Awardees concerning their data management needs and report their findings back to the Division. Many thanks to our volunteers, Ibironke Lawal, Joan Omoruyi, Vanessa Middleton, Janet Fransen, Megan Sapp Nelson, Danianne Mizzy, Paula Johnson, Ted Baldwin, Daureen Neddill and Amy Van Epps.

They would welcome additional volunteers to help canvas the room during the poster session. An orientation for canvassers on conducting these interviews is being planned by the SWAT Team. Please contact Ronke Lawal at [ilawal@vcu.edu](mailto:ilawal@vcu.edu) if you are interested in helping out.

### **Unconference Session**

Spontaneously generated from a recent discussion on ELD-L, Danianne Mizzy and the Standards and Accreditations Committee are planning an unofficial session entitled, "Value, Impact and Performance - We know we are VIPs but how to measure and demonstrate it?" This session will be concerned with evaluating library services for engineering students and faculty, and demonstrating their value to our institutions. It will not be listed in the official conference program, but will be on the ELD program to the conference. We are ostensibly planning to hold this session immediately after the ELD Business meeting on Tuesday, June 12. Stay tuned for more details.

## Conference Program Update for San Antonio, 2012

(continued from page 4)

### Social Activities

We have a number of fun social activities planned this year. Following the ASEE Division Mixer and Welcome Reception on Sunday at 9:00pm, SPIE is sponsoring a dessert reception for ELD members and guests. Location and details will be announced soon. The ELD Welcome Reception, organized by Amy Buhler and sponsored by IEEE, will be at the Zuni Grill on Monday at 6:30pm. Our Annual Banquet, organized by Anne Rauh and sponsored by Elsevier, will take place Tuesday evening at 6:00pm at the Iron Cactus on San Antonio's River Walk.

### Extracurricular Activities

As always, Mel DeSart is organizing various activities before and after the conference. Watch for his CUEBALLS updates on the ELD list.

I look forward to seeing you all in San Antonio.

Doug McGee  
Program Chair and Chair-Elect  
Engineering Libraries Division  
[dmcgee@seas.upenn.edu](mailto:dmcgee@seas.upenn.edu)

## Friendly Paper Review Service

Brought to you by the ELD Mentoring Committee  
Jay Bhatt, Chair



**Contact Carol Brach**

**Email:** brach.10@nd.edu

**Phone:** 1.574.631.5070

Have you submitted an abstract for Vancouver 2011?

Would you like some feedback on a paper you are planning to submit for publication elsewhere?

Need help writing your paper?

Want to improve your chances of having your manuscript accepted for publication?





## Committee Reports

### Nominating Committee

I hope by now that you have all seen the slate of candidates compiled by the Nominating Committee and announced over the ELD\_DIV listserv. I want to thank the candidates who have agreed to serve ELD through being an officer.

We have two candidates for **Director**:

Julia Gelfand, University of California, Irvine  
Aleteia Greenwood, University of British Columbia

We have two candidates for **Secretary/Treasurer**:

Patricia Kirkwood, University of Arkansas  
Megan Sapp Nelson, Purdue University

The elections opened Thursday, March 8<sup>th</sup> at 12:01 am Eastern Time and will be open through 11:59 pm on Friday, March 23<sup>rd</sup>. The ballot is available at <http://gemini.lib.purdue.edu/ELDvoting>

Statements from the candidates, along with their photos, are linked from this ballot. The statements can also be found on the following two pages:

<http://www.lib.purdue.edu/engr/ELD/2012Dirbios.html>  
<http://www.lib.purdue.edu/engr/ELD/2012STbios.html>

Results of the election will be announced on or before Friday, April 6<sup>th</sup>. Our new officers will begin their roles on Wednesday, June 13<sup>th</sup> during the conference. Please remember to vote!

I would like to thank Amy Van Epps for administering the voting and Beth Brin and Linda Whang for serving on the Nominating Committee.

Bob Heyer-Gray  
ELD Past Chair / Chair, Nominating Committee

### ELD Membership Directory

ELD Membership Directory is current as of March 2012 and the URL and password were distributed to the ELD Listserv. If needed, I am happy to resend the URL and password or email a PDF copy to individual current members of ELD. I have modified the manner in which the directory is updated, please take a moment to verify your information is correct. If you have any questions, please email or call.

## People and Places

(IMPORTANT: Please be aware access to the ELD Membership Directory is a benefit of membership. The Directory address and password, and the information contained in the Directory should not be reproduced, copied, forwarded, edited, sold, or distributed. We value your privacy as well as others' in the Directory.)

Megan Tomeo  
Membership Directory Editor

**Hema Ramachandran** and **Caroline Smith** are co-authors, along with Ashok Naimpally (Dean of Instruction for Math, Science & Engineering at Fresno City College), of *Lifelong Learning for Engineers and Scientists in the Information Age* published by Elsevier in December 2011. The book covers information literacy and internships, including assessment techniques for lifelong learning, teamwork and information literacy as defined by the ABET criteria. It also discusses critical thinking skills for scientists and engineers and their role in lifelong learning. The authors hope this book will be useful to librarians, engineering and science educators, career advisors, employers, and students. Hema knows both of her co-authors from having worked with them (Smith at Caltech and Naimpally at Cal State Long Beach), and this project actually got started when the three met up in Pittsburgh, PA when ASEE held its annual conference there in 2008.



### Reviewers Wanted!

The Mentoring Committee is seeking reviewers for the Friendly Review Service

**Task:** first review of paper or presentation (not a blind review), commenting on organization, supporting sources/data for premise, clarity of illustrations. This is not a spelling/grammar check!

**Qualifications:** knowledgeable, busy, quick responder, friendly. (You do this every day; you're already qualified!)

**Contact:** Carol Brach ([brach.10@nd.edu](mailto:brach.10@nd.edu); 1.574.631.5070)

For more information see <http://eldwiki.lib.ucdavis.edu/index.php/Mentoring>

## People & Places *(Continued from page 7)*

### New Members:

**Giovanna Badia.** Since October 2011, I have been working as a Liaison Librarian at McGill University's Schulich Library of Science and Engineering in Montreal, Quebec. My responsibilities include answering reference questions, providing instructional services, and collection development. I previously worked as a Medical Librarian at the Royal Victoria Hospital from 2004-2011. I am a native Montrealer, trilingual (i.e., I speak English, French, and Italian), and I obtained both my B.A. and M.L.I.S. degrees from McGill University. My professional interests include: designing and delivering instructional services, conducting needs assessments and marketing, evaluating the quality of library services, improving website design to increase usability, and literature searching for systematic reviews. I am looking forward to participating in ASEE-ELD.

**Elizabeth Cheney** is one of the Science and Engineering Librarians at UCLA. More specifically she is responsible for the Civil and Environmental Engineering department and the Computer Science department, both of which involve teaching and consultations, in addition to reference duties. She has been in her current position for six months, and previously was an intern at UCLA's College Library with a focus on reference and instruction. Both her undergraduate and graduate degrees come from UCLA, so she is very happy to be able to work there and help out my fellow Bruins with their studies and research.

**Laura Schmidli** is an Information Services Librarian for Wendt Commons at the University of Wisconsin in Madison. She started as liaison to the departments of Chemical and Biological Engineering and Materials Science and Engineering in February 2012. Laura previously worked at the University of Wisconsin - Stevens Point as their Web Services Librarian, and has previous library instruction experience with first year and life sciences students. She is also currently the web co-administrator for ACRL's Instruction Section. Having found home in Wisconsin, she received both her MLIS (2009) and BS (2005) from UW-Madison. Laura is very interested in using technology to meet instructional and research needs, and looks forward to diving into the world of chemical information.

**Kari Kozak** is the Interim Head of the Lichtenberger Engineering Library at the University of Iowa, and has been in this position since July 2011. Before taking her position at the Engineering Library, she was a Science and Engineering Librarian at Texas A&M University and a Science Education & Outreach Librarian at the University of Iowa. She has bachelors of science degrees in Meteorology and Environmental Studies from Iowa State Meteorology and a Masters of Sciences in Library Sciences from the University of North Carolina – Chapel Hill. She considers herself a lover of bad weather and she competes in the sport of curling.



## Lightning Talks, San Antonio Conference

Do you and your library have a new project, program, partnership, or tool that you would like to share with your fellow ELDers? If so, please propose a Lightning Talk to give in San Antonio this summer. This year's Lightning Talk session will be on Monday, June 12<sup>th</sup> from 12:30-2:00.

What is a Lightning Talk?

A Lightning Talk is a very short (2 minutes) presentation on a timely topic of interest to academic engineering librarians. This year we are hoping for about 15 talks on any number of topics. Possible ideas include:

- New engineering information tool
- New search widget or app
- Digital project
- Outreach program
- Collaboration or partnership
- Solution to a common problem

The main goals of this session are to learn something about our colleagues and to generate discussion during the session and over the course of the conference.

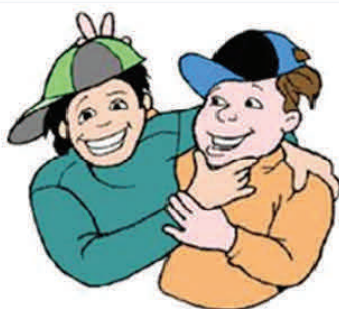
**Please submit your Lightning Talk proposal to Annie Rauh ([aerauh@syr.edu](mailto:aerauh@syr.edu)) by April 6<sup>th</sup>.**

Your proposal should include:

- Your name and affiliation
- Title of talk
- Brief description of your talk (no more than 3 sentences)

PowerPoint presentations are not required, but if you wish to use one please limit it to 3-4 slides. Remember that two minutes is shorter than most commercial breaks.

Anne E. Rauh  
Engineering and Com-  
puter Science Librarian  
Syracuse University  
Library  
[library.syr.edu](http://library.syr.edu)  
[aerauh@syr.edu](mailto:aerauh@syr.edu)



### Seeking Conference Buddies

Remember your first conference? Did you spend an hour in the registration line? Did you find the right meeting room the first time? Did you come with a project in mind but never found the people who had similar ideas?

So volunteer to be a Conference Buddy! Meet new friends! Show a colleague why the ELD meetings are as good for networking as they are for new/improved ideas.

Contact Bruce Neville ([bneville@tamu.edu](mailto:bneville@tamu.edu); 1-979-845-7572)

For more information see <http://eldwiki.lib.ucdavis.edu/index.php/Mentoring>