



Engineering Libraries Division



May 2020

Inside this issue:

2020 ELD Sponsors	4
Conference Program Update	5
CDEI Update	7
Committee Annual Reports	8
Treasurer's Report	14
Spotlight on Members	17
Mentoring Reminders	18

Message from the Chair

Julie Cook



Greetings from Quarantine:

It's been three months since our last ELD newsletter, and so much has changed about what we know about the pandemic and how our lives have been directly affected. Working from home, time seems to blend and blur: What day is it today? Do we still have weekends? I am very grateful to have a job that allows me the privilege of continuing to work from home, and my heart goes out to those in our communities where this isn't an option or, even worse, their job no longer exists. On a national level, research shows that the pandemic response scenario could have played out differently with potentially fewer devastating results, which is a disturbing thought. But that's a discussion for another time and place.

I sincerely hope that all of you have been faring in the best possible way, both professionally and personally. Without knowing exactly what the future will bring, I have confidence that educational institutions will adapt and find a way through, perhaps applying newly learned lessons to teaching, research, and development.

In March, ASEE HQ pivoted quickly to transition the Annual Conference to an online format. I am grateful to David Hubbard and the Program Committee for their thoughtful response and skillful adaption to this huge change. While I am sad not to be making the trip to Montreal and will certainly miss our wonderful social events discussing programming over a cool beverage, I am confident that the ELD program will be as robust as ever! Although we'll have to be creative with the refreshments, there will be opportunities to connect and catch up with ELD-ers in the virtual space as well.

The results of the ELD election were shared by Willie Baer in April and we have two new officers beginning their roles on the Executive Committee (EC) after the Conference in June. Congratulations to incoming Secretary/Treasurer Daniela Solomon and new Director Julie Arendt!

Continued on next page...



ELD is a division of the American Society for Engineering Education. Its mission is "to promote and strengthen the role of the library as an integral part of engineering education."

Message from the Chair (*continued*)

The EC appointed four new committee chairs for the 2020-2022 term. Amani Magid will take over as Publications Committee Chair after learning the ropes from Lisa Ngo for a year. Jean Bossart will become Chair of the Membership Committee as Dave Schmitt steps down after a very productive run. Michelle Spence will become Chair of the Development Committee after mentoring with Amy Buhler and gaining her wealth of knowledge and valuable relationships. Lastly, Mel DeSart has been appointed Chair of the Scholarly Communication Committee.

Julie Arendt will be stepping down as Accreditation & Standards Committee Chair due to her new role as Director. Daniela Solomon will give up being Chair of the Scholarly Communication Committee since she is incoming Secretary/Treasurer.

A huge thanks to all our outgoing Chairs for their service and engagement. ELD needs willing people to work with our many committees. Please contact the chair of the committee you're interested in for more information on how to join.

In ASEE news, the results of the PIC reorganization vote were shared by the PIC Chairs at a Town Hall for division leadership, and I have sent these out to the listserv. The Red scenario received the most votes, with 87% of members participating. According to this scenario, ELD will be in PIC "Cherry (C)." Please see the graphics below for the details on the vote and the composition of proposed PIC "C."

Most Preferred Scenario

RED		GREEN		BLUE	
Red	Strength	Green	Strength	Blue	Strength
6	80.25	4	49.38	2	25.00
6	60.75	4	67.00	1	10.00
7	43.79	2	26.50	1	32.50
6	54.25	4	23.13	1	37.00
1	100.00	1	70.00	0	0.00
26		15		5	
56.52%		32.61%		10.87%	
49.06%		28.30%		9.43%	

PIC Cherry

- Biological and Agricultural Engineering Division
- Biomedical Engineering Division
- Chemical Engineering Division
- Community Engagement Division
- Engineering and Public Policy Division
- Engineering Ethics Division
- Engineering Libraries Division
- Liberal Education/Engineering & Society Division
- Materials Division
- Technological and Engineering Literacy/Philosophy of Engineering Division

Next steps in this process are as follows. At the ASEE Board meeting on June 21, 2020, the following motions will be made:

Motion to dissolve all current PICs (PICs I, II, III, IV and V) effective just prior to the start of the June 29 Board meeting.

Motion to approve the new PIC organization, including PIC I, II, III, IV and V with the Division association as described.

Motion to appoint current PIC Chairs for their remaining term and newly-elected PIC Chairs to their remaining term.

Motion to approve new temporary ALL PICs by-laws until such time that the ALL PICs by-laws can be approved by each new PIC. The intent is to have one common set of by-laws that every PIC follows.

Continued on next page...

Message from the Chair *(continued)*

ELD may (or may not) have a different PIC Chair assuming all the above motions are passed. Our current PIC IV Chair, Beth Holloway, will attend our Business Meeting to share any updates and take questions. The meeting will be via Zoom on Wednesday, June 24, 3:30-4:30pm (EDT). Please note that even if you are not attending the virtual conference, phone access to dial into the Business Meeting will be provided.

This is my last report as Division Chair, and I want to sincerely thank all the ELD Officers, Committee Chairs, and members for your support over the last 3 years, and trusting me to serve ELD as an officer. I encourage all ELD members to get involved at whatever level you feel able - there will always be a spot to participate. If I can do it, you can too!

Be well.

Julie Cook



Thank You 2020 ELD Sponsors!



Conference Program Update

Hope you and yours are doing well these days. These are definitely interesting times, complete with many challenges and opportunities. When I wrote to you back in early March, all the pieces for the conference in Montreal were coming together. Then COVID-19 happened, along with lots of uncertainties. Fortunately, ASEE decided to host a virtual conference, June 22-26, 2020, that will provide us with an opportunity to share our work, experiences, and a chance to see colleagues.

Many thanks to all that submitted papers and proposals, reviewed papers, helped plan the program, secured funds on behalf of ELD, and a multitude of other efforts and contributions. It's truly incredible and inspiring to see how many ELD members are involved in planning the conference program, and their willingness to share their time, energy, ideas, and skills. It would not be possible without you. We may be apart right now, but at least for me, the conference planning made me feel very connected to the ELD membership. I hope some of you experienced that as well.

We have had to make adjustments to the original schedule, but the program remains pretty full. Please note that all times shown are Eastern Daylight Time (EDT). I suppose a mnemonic one can use is that ASEE is located in Washington DC. Please note that the authors presenting during the technical sessions will prerecord their presentations (available 24/7 during the conference) and that the 20-minute technical sessions you see on the schedule are live Q&A sessions.

The ELD program kicks off with a technical session (*Information Literacy in First-Year Courses and Co-Curricular Experiences*) on Monday June 22nd at 10:20am EDT. We have another technical session (*Improving and Understanding Engineering Collections and Publication*) later in the morning. We had a great response to the call for lightning talks, so again we'll have two lightning talk sessions; the first one is on Monday. The lightning talks will all be conducted live (1:00-2:00pm) and are often as entertaining as they are informative. We'll then have the ASEE Division Mixer in the afternoon.

Tuesday starts with a technical session (*Engineering Librarian Collaborations in the Library, On-Campus, and Beyond*). We then have a panel session, *Metrics and Measuring Research Impact: What Engineering Librarians Really Need to Know*, early in the afternoon with panelists Sylvia Jones and Tom Volkening. Daniela Solomon and Bill Bowman will moderate. Like the technical sessions, the panelists will prerecord their presentations and the 30-minute session will mainly be an interactive Q&A session. In the afternoon, we will have the ELD Roundtable Discussions. This session, moderated by Amy Van Epps and Bruce Neville, will provide an opportunity for small group discussions on a variety of topics related to engineering librarianship. More details on this session to follow.

We'll have two more technical sessions on Wednesday morning (*Professional Issues and Opportunities for Engineering Librarians* and *Assessing, Expanding, and Innovating Information Literacy*), followed by our second lightning talk session. Our Business Meeting in the afternoon will include the usual updates from the PIC IV Chair, Beth Holloway, and ELD committees. ELD members not attending the virtual conference will be provided information to call into the Business Meeting to listen. We will share any materials that are planned to be distributed at the Business Meeting prior to the meeting, plus minutes will be taken and shared in the September ELD Newsletter as usual.



Continued on next page...

Conference Program Update (*continued*)



On Thursday morning, we have our sixth technical session (*Opening Up: Data, Open Access, and Open Educational Resources*). The Extended Executive Committee Meeting is scheduled for the afternoon. As mentioned in other emails I've sent recently, there are over 400 technical sessions, 47 panel sessions, 35 workshops, 7 distinguished lectures, 2 keynote talks, and a session with engineering deans discussing COVID-19 campus responses, all focused on engineering education. That's a lot to view if you have the time and interest!

Below is a summary grid of the ELD program. More details about the ELD sessions can be found on the [2020 ELD Conference Webpage](#) and through the [ASEE Online Session Locator](#).

Summary of ELD 2020 ASEE Virtual Conference Program

Time (EDT)	Monday, June 22	Tuesday, June 23	Wednesday, June 24	Thursday June 25	Friday June 26
10:20-10:40am	[M221] Technical Session 1	[T221] Technical Session 3	[W221] Technical Session 4		
10:40-11:00am				[R321] Technical Session 6	
11:40am-12:00pm	[M321] Technical Session 2		[W321] Technical Session 5		
12:00pm-1:00pm	Virtual Exhibits	Virtual Exhibits	Virtual Exhibits	Virtual Exhibits	Virtual Exhibits
1:00-2:00pm	[M421] ELD Lightning Talks 1	[T421] Panel Session: Metrics and Measuring Research Impact (1:00-1:30pm)	[M421] ELD Lightning Talks 2		
3:30-4:00pm		[T521] ELD Roundtable Discussions	[W521] ELD Annual Business Meeting		
4:00-4:30pm				[R621] ELD Extended Executive Committee Meeting	
4:30-5:30pm	[U660] ASEE Division Mixer				

Many thanks to the Program Committee (Amy Buhler, Kari Kozak, NuRee Lee, Eric Schares, Daniela Solomon, Michelle Spence, and Larry Thompson) and the Executive Committee (Julie Cook, Kari Kozak, Eric Schares, and Michelle Spence) for all their help working through some challenging issues this year.

I look forward to seeing everyone online next month!

David E. Hubbard
2020 ASEE-ELD Program Chair

Committee on Diversity, Equity, and Inclusion (CDEI) Update

The Committee on Diversity, Equity, and Inclusion (DEI) is planning a full slate of DEI programming for the virtual conference in June. I know everyone will be suffering from Zoom fatigue, but there are some excellent programs planned. The followed chart shows the full schedule and whether we have competing programming (generally not). There will be a Diversity Booth of some sort during the exhibition time every day. We hope you'll be able to swing by at least once during the conference. The Committee has a Distinguished Lecture on Wednesday afternoon on "Indigeneering." I will be co-moderating a DEI discussion on Friday afternoon. We will be deciding what to discuss based on the group's size and interests when we meet, so I can't say a whole lot more at this time. Please let me know if there are any questions.

Bruce Neville
ELD Delegate to the CDEI

Session	Day	Time (pm)	Title	ELD Conflict?
M417	Mon	1:00-1:30	The Engineer of 2020: Realizing the Vision?	No
T577C	Tues	2:30-3:30	Do You See Me? Hypervisible Invisibility #EngineeringWhileBlack	No
T577B	Tues	3:30-4:30	Safe Zone Level 1	Yes
W477A	Wed	1:00-1:30	CDEI Best Diversity, Equity & Inclusion Paper Award Finalist Presentation	Yes
W477B	Wed	2:00-2:30	Distinguished Lecture: Indigeneering Engineering Education: Welcoming Indigenous Knowledge and Wisdom with Integrity	No
W577C	Wed	2:30-3:30	Equity & Inclusion Advocacy: Diversity, Equity & Inclusion 100	No
W577B	Wed	3:30-4:30	Safe Zone Level 2	Yes
R477A	Thurs	2:00-3:00	Equity and Inclusion Advocacy: Diversity, Equity & Inclusion 200	No
R577	Thurs	3:00-4:00	Safe Zone Level 3: Deep Dive	No
R677	Thurs	4:00-5:00	Inclusive Practices for Implementing Collaborative Learning in Large Classes	Yes
R677B	Thurs	5:00-6:00	CDEI Roundtable Conversations on Diversity, Equity & Inclusion	No
F477	Fri	2:00-3:00	Expanding Resources that Connect Diversity, Equity, Access, and Inclusion with Ethics Education	No
F577	Fri	3:00-4:00	Equity & Inclusion Advocacy: Diversity, Equity & Inclusion 300 (co-moderated by Bruce Neville, ELD)	No

Committee Annual Reports

Awards Committee

Erin Rowley, Chair

The Awards Committee of the Engineering Libraries Division is pleased to announce the 2020 winners of the Homer I. Bernhardt Distinguished Service Award and the Best Publication Award.

The **ASEE ELD 2020 Homer I. Bernhardt Distinguished Service** Award goes to Craig W. Beard of the University of Alabama at Birmingham. As his nomination letter said, “Craig’s record of service to ELD over a 19-year period is arguably unmatched.” He has served in ELD through the officer track (secretary/treasurer, program chair, chair, nominating committee chair) as well as many ELD committees, including the Publications Committee (13 years with 10 years as Committee Chair), the Literature Guides Subcommittee, the Union List Subcommittee, the Awards Committee (9 years), the Program Planning Committee (10 years), and the Development Committee (2 years), and ELD listserv co-moderator (16+ years).

One nomination letter dug even deeper into Craig’s ELD service years, stating:

“Looking at Craig’s total service to ELD is where the numbers get downright spooky. If one counts a single year of service on an ELD committee as one ‘committee year’ of service (NOT double counting when Craig was both a member of AND Chair of Publications), then in the 19 years Craig has been an ELD member he has amassed 74 ‘committee years’ of service, an average of nearly 3.9 committee years of service per year across all 19 years.”

However, Craig’s service to ELD goes far beyond numbers. As one nomination letter stated, “Craig’s service is not just about the number of years and variety of committees, which is significant, but also the ability to make contributions with broad impact that help the entire division.” It is clear from the letters of support that Craig is known by many as being warm, continually optimistic, cheerful, and dedicated. He has never hesitated to offer his support and mentorship to current and new members of ELD. Perhaps it is this quote that best sums up why Craig is a deserving recipient of this year’s award: “the man never stops serving.”

Many thanks to Craig for his many contributions to ELD! Congratulations, Craig!

The **ASEE ELD 2020 Best Publication Award** goes to Danielle Cooper, Rebecca Springer, Jessica G. Benner, David Bloom, Erin Carrillo, Alexander Carroll, Bertha Chang, Xiaoju Chen, Erin Daix, Emily Dommermuth, Rachel Figueiredo, Jennifer Haas, Carly A. Hafner, Whitney Hayes, Angela Henshilwood, Alexandra Lyn Craig Krogman, Rebecca Zuege Kuglitsch, Sabine Lanteri, Abbey Lewis, Lisha Li, Matthew R. Marsteller, Tom Melvin, Todd Michelson-Ambelang, William H. Mischo, Colin Nickels, Virginia Pannabecker, Fred Rascoe, Mary C. Schlembach, Yi Shen, Erin M. Smith, Michelle Spence, Kris Stacy-Bates, Erin Thomas, Larry Thompson, Mindy Thuna, Christie A. Wiley, Sarah Young, and Siu Hong Yu for their 2019 Ithaka S+R article, “Supporting the Changing Research Practices of Civil and Environmental Engineering Scholars.” The members of the committee unanimously agreed that this article represents a significant contribution to the field of engineering information.

This study, which focused on the research needs of civil and environmental engineering faculty, was impressive as it collected data from eleven academic libraries in the United States and Canada. The semi-structured interview style of the study allowed key themes to be identified for each participating institution (detailed in



Craig Beard at the 2019 ASEE Conference, flanked by previous Bernhardt Award recipients, Larry Thompson (Virginia Tech, left) and Mel DeSart (University of Washington, right).

Continued on next page...

Committee Annual Reports (*continued*)

individual site reports) where the Ithaka S+R publication provided an overall analysis of the findings.

The study was described by committee members as “ground breaking” and a study that shared “tremendous insights.” One committee member specifically noted that this study will serve as a baseline for years to come. While the study focused on civil and environmental engineering specifically, it used a clear and thoughtful methodology that can be used in any area of engineering. Another committee member commented that “Ithaka S+R studies, in general, are always a welcome addition to the professional reading list.”

Congratulations to all of the authors of this publication!

Development Committee

Amy Buhler, Chair

What a whirlwind year! Last year in Tampa, we had 16 generous sponsors supporting various conference-related events. This year, we had 18 sponsors slated to support ELD meals, social events, conference travel support, and technical sessions for the Montreal 2020 Conference. Then COVID-19 hit.

Although we are now attending this year’s conference virtually, we wanted to recognize the commitment of our sponsors to ELD and let you know that many have allocated this year’s support to the ASEE 2021 Conference in Long Beach, California. **Please take the time to visit our sponsors in the virtual Exhibit Hall and thank them for their generous sponsorship of ELD.**

Here are the sponsors for the 2020 ASEE Virtual Conference, in alphabetical order (how librarian):

ACS – AIAA – ASCE – ASME – ASTM – AWS – Begell House – Elsevier – ICE – IEEE – INSPEC/ IET – IOP – Morgan & Claypool – McGraw Hill – Overleaf – SAE – SPIE – Techstreet

A special thanks to the members of the Development Committee for 2019 – 2020: Jay Bhatt, Craig Beard, Mel DeSart, Bernadette Ewen, Bob Heyer-Gray, Erin Rowley, Michelle Spence, Eric Schares, Stephen Stich, Larry Thompson, and Amy Van Epps. These liaisons worked very hard over the past year to connect with the sponsors and procure conference funding. They then had to pivot to navigate all the COVID-19 issues relating to development.

I would also like to extend a special thank you to Michelle Spence for agreeing to succeed me as Chair of the Development Committee.

Electronic Voting

Eric Schares, Administrator

ELD conducted a successful officer vote for Secretary/Treasurer and Director in March (see Nominating Committee update for results).

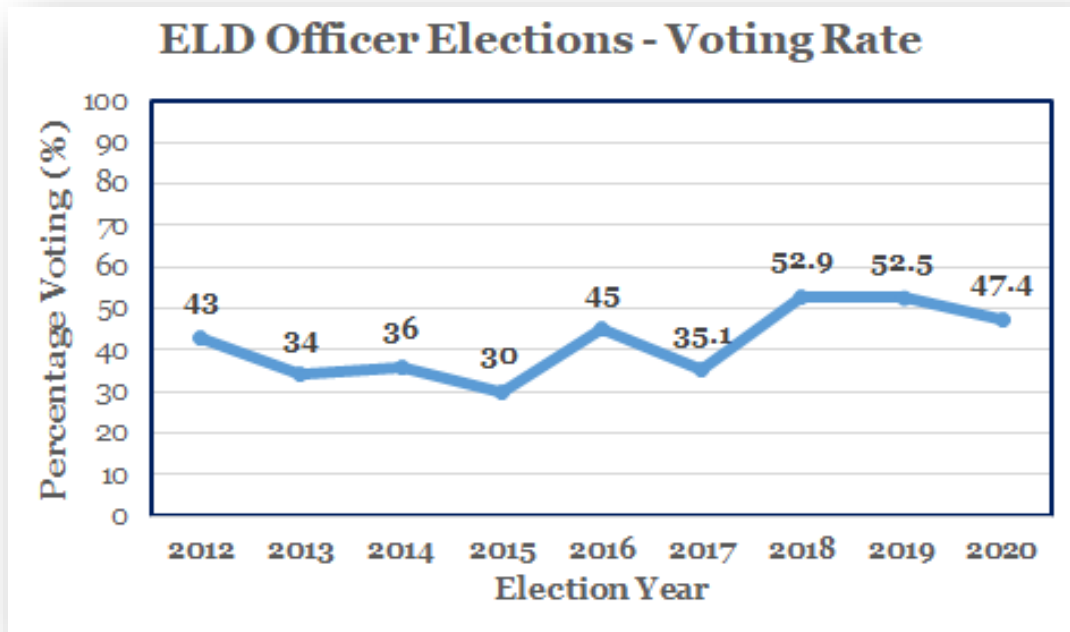
Voting was open for two weeks, March 13-27, 2020. We sent 230 ballots and received 109 completed, for a voting rate of 47.4%. This is roughly in line with previous years, though voting may have been suppressed a bit due to the COVID-19 upheaval happening around that time.

I was able to go through past newsletters and construct the following graph of voting rates back to 2012 (see next page). Special thanks to Doug McGee for his May 2014 newsletter update that contained three years’ worth of voting rates in one shot.

Special thanks also to Amy Van Epps for her years of service in this role and for providing help to ensure a smooth handover of EVA duties.

Continued on next page...

Committee Annual Reports *(continued)*



Electronic Discussion List(s)

Mel DeSart, Co-editor

List subscriber statistics for both ELDNET-L and ELD-L (as of the spring of each year) from list creation to date:

ELDNET-L	ELD-L	ELDNET-L	ELD-L
Start up		2005/06: 460	2005/06: 223
(August 1991): 62		2006/07: 492	2006/07: 234
1991/92: 119		2007/08: 513	2007/08: 237
1992/93: 187		2008/09: 536	2008/09: 237
1993/94: 314		2009/10: 554	2009/10: 236
1994/95: 436		2010/11: 581	2010/11: 245
1995/96: 477		2011/12: 607	2011/12: 239
1996/97: 464	Start up	2012/13: 613	2012/13: 240
1997/98: 428	(Sept. 1998): 169	2013/14: 643	2013/14: 232
1998/99: 423	1998/99: 174		
1999/00: 392	1999/00: 164	2014/15: 644	2014/15: 238
2000/01: 396	2000/01: 167	2015/16: 637	2015/16: 233
2001/02: 387	2001/02: 188	2016/17: 668	2016/17: 228
2002/03: 390	2002/03: 208	2017/18: 665	2017/18: 232
2003/04: 421	2003/04: 201	2018/19: 673	2018/19: 239
2004/05: 467	2004/05: 209	2019/20: 694	2019/20: 232

Continued on next page...

Committee Reports (*continued*)

The number of subscribers to ELDNET-L increased a bit from last year (just a few subscribers from hitting 700). However, there are still dozens of ELD members (and who are thus ELD-L subscribers) who are NOT also subscribed to ELDnet-l. Why? No idea. But whoever those people are, they are missing out on over well over half of the engineering library-related list traffic that subscribers to both lists are receiving.

For ELD-L, the number of ELD members with e-mail addresses who agree to be subbed to the list directly determines the number of list subscribers. Given that a small number of ASEE members (who are not librarians) choose to join ELD but do not want to be subscribed to ELD-L, the number of ELD-L subscribers will always be a tiny bit lower than the total number of ELD members. The number of ELD-L subscribers is down a bit from this time last year but equals the number of subscribers in 2017/18.

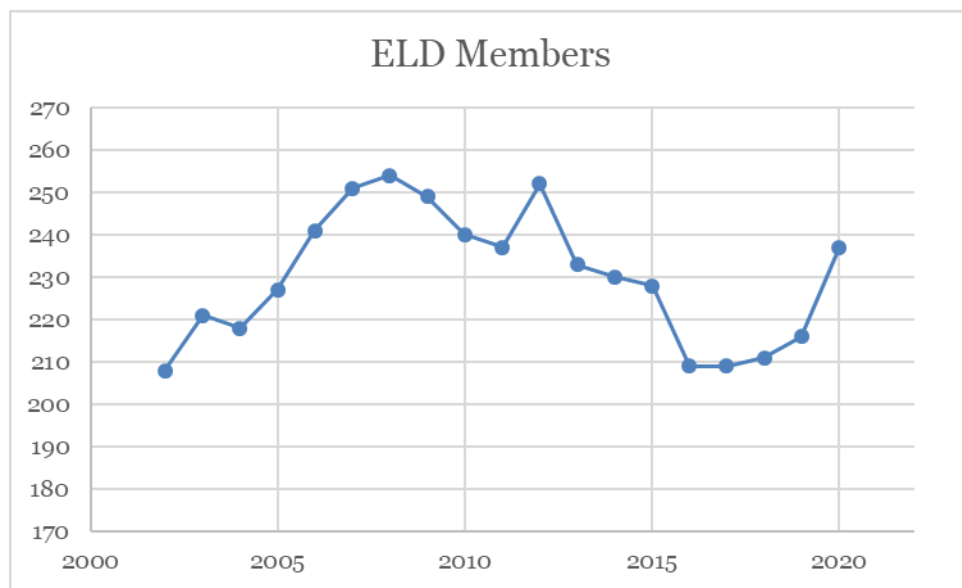
Craig Beard of the University of Alabama at Birmingham continues as co-editor par excellence of both lists. He handles the posting (or not) of most submissions to the lists, while I deal with new subscribers to the lists as well as most problems.

Membership

David Schmitt

As of May 1, 2020, the ELD consists of 237 members. This number is quite a bit higher than at the same time last year (216), and the most members ELD has had since 2012. Your humble membership chair isn't aware of any obvious reason for this increase.

Comparing the rosters of May 2019 and May 2020, 33 members left the division while 54 different members joined. This yearly turnover rate is fairly normal. (Between May 2018 and 2019, there was a turnover of 38 members.)



By institution, ELD membership consists of 193 members representing 143 universities, 26 members representing 10 publishers, 2 corporate members, 9 retired members, and 7 student members.

Of the universities represented, 127 are in the US, 13 are in Canada (20 members) and one each is in Puerto Rico, Qatar, Spain, and the United Arab Emirates.

Continued on next page...

Committee Annual Reports *(continued)*

To the right is a chart of ELD membership, by type:

In the past year, the membership committee has continued to monitor the membership list monthly, sending updates to the listserv and directory owners for updating. We also contacted new members, requesting bios to include in the newsletter and contacted all new subscribers to ELDnet-L, inviting them to join ELD.

At the 2019 Annual Conference, the committee, in cooperation with the ELD Anniversary Committee, presented certificates of recognition to members for their years of activity in the division; specifically, members who had reached 5 year milestones, starting with 10 years of membership. We will continue this tradition in 2020 (virtually). The list of 2020 honorees is shown here.

Professional	151
Professional Online	55
Contact Representative	10
Retired	9
Student Online	6
Life	4
Student	1
K12 Educator	1

Years	Member	Institution	Join Date
35	Charlotte Erdmann	Purdue University at West Lafayette (retired)	January 1, 1985
35	Tom C. Volkening	Michigan State University	September 1, 1985
35	Nestor L. Osorio	Northern Illinois University	October 1, 1985
30	Beth L. Brin	Boise State University	November 1, 1990
25	Amy S. Van Epps	Harvard University	February 7, 1995
25	Stella Ota	Stanford University	June 21, 1995
15	Megan R Sapp Nelson	Purdue University at West Lafayette	January 11, 2005
15	Julie M. Cook	University of Washington	March 8, 2005
15	Scott A. Curtis	University of Missouri - Kansas City	July 17, 2005
15	Lisha Li	Georgia Institute of Technology	August 4, 2005
15	Sarah Jane Dooley	Dalhousie University	September 18, 2005
15	Kristen MacCartney	IEEE	December 8, 2005
10	Tara Mawhinney	McGill University	March 17, 2010
10	Jim Miller	University of Maryland College Park	April 1, 2010
10	Honora N. Eskridge	Vanderbilt University	May 30, 2010
10	Deborah Helman	University of Wisconsin - Madison	September 7, 2010
10	Susan K. Smith	University of Kentucky	November 12, 2010

Membership Directory

Bernadette Ewen, Chair

The ASEE ELD Directory of Members was updated five times within the last year at no cost to the division. The May 2020 edition of the directory lists 214 members, representing seven different countries. Directions on how to access the May 2020 directory were sent to the ASEE ELD-L listserv in late May 2020.

ELD members that wish to update their information listed in the ASEE ELD Directory of Members should e-mail their information to ewen@rose-hulman.edu. Thank you to David Schmitt, Mel DeSart, Marina Zhang, and all other members who provided me with updates for the directory.

Continued on next page...

Committee Annual Reports *(continued)*

Mentoring Committee

Kevin Drees, Chair

In anticipation of the 2020 ASEE Virtual Conference, I would like to call attention to the Conference Buddy Program and the Friendly Paper Review Service announcements on page 18 in this newsletter.

The **Conference Buddy Program** matches first-time attendees (newbies) with seasoned conference attendees to help newbies make the most of the conference experience. This is a strictly voluntary program which makes the conference atmosphere more welcoming and inclusive. If you are a newbie and you'd like to interact with a seasoned conference attendee and gain her/his insights, or, if you are a seasoned conference attendee and you would like to share your wisdom with a newbie, contact Bruce Neville at bneville@tamu.edu.

Need help sorting through your ideas for a paper? Want to improve your chances of having your manuscript accepted for publication? If so, contact Kevin Drees at kevin.drees@okstate.edu, to try our **Friendly Paper Review Service**.



Publications Committee

Amani Magid and Lisa Ngo, Co-Chairs

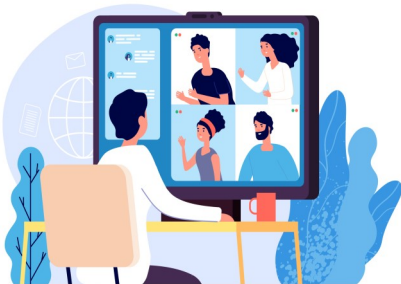
We hope this update finds everyone well, healthy, and safe. Thanks again to all the reviewers on the committee this year! The Publications Committee has nominated one ELD paper for the Best Paper and one ELD paper for the Best Diversity paper.

At the end of this year Lisa Ngo will be finishing her term as Co-Chair of the Publications Committee; she has served from 2018-2020. Her leadership has been outstanding and will be missed. Amani Magid will become the Chair of the Publications Committee in the coming year.

Scholarly Communication Committee

Daniela Solomon, Chair

Members of the Scholarly Communication Committee have been busy crafting the ELD Committee Membership Best Practices document that was recently approved by the ELD Executive Committee. The document can be found on the ELD website [here](#).



This document provides ELD members interested in volunteering for committee work with an understanding of the expected level of participation associated with service on an ELD committee.

We would like to invite the participants to the 2020 ASEE Conference to a panel discussion session on the topics of research metrics and impact assessment. The panelists will talk about various metrics available and the issues and concerns related to the use of these metrics for scholarly activity impact assessment.

Please remember to send to eld-pl@u.washington.edu your new publications or the link to your Google Scholar profile if you haven't done it yet.

Continued on next page...

Committee Annual Reports *(continued)*

Treasurer's Report

Kari Kozak, Secretary/Treasurer

FY 2019 (October 1, 2018 - September 30, 2019)

ELD finances are doing well. Staffing changes in the ASEE accounting department have seemed to stabilize, with queries and reconciled quarterly financial reports provided in a timely manner. Below are descriptions of the three account types maintained by ASEE for ELD, followed by the FY 2019 finances based on the financial reports received from ASEE.

BASS Account (Banking and Accounting Services System)
Operating Account (OA)
Conference Account

The BASS Account was ELD's principal account up until 2016. It earns interest that is posted quarterly. Money in this account is carried over from one fiscal year to the next, though ASEE encourages divisions to spend down their BASS Account, as its purpose is to support the mission and vision of ASEE and ELD.

Operating Account (OA) funds were discontinued in June 2019. This account was mainly used for the same purpose as BASS Account funds, though there are some restrictions placed on OA funds. These funds need to be fully spent each year. OA fund allocations are based on membership, currently at \$1.00/member. This is now part of the BASS account.

The Conference Account was established starting at the 2016 Annual Conference as a pass through account to pay for any conference related activities. It has become ELD's de-facto principal account since most of our business revolves around conference programming, awarding stipends for conference travel, and conference-related food and drink. Establishing a Conference Account allows ELD to avoid paying the 30% fee on the significant sponsorship donations we procure since we can deposit them to this account rather than the BASS Account, and spend them almost immediately. After all our conference expenses are paid, the remaining monies in the Conference Account are transferred to the BASS Account where they do incur the 30% fee. For the 2019 conference, the amount due to ASEE for Meals and AV was larger than was available in the Conference Account, so the \$9,979.91 remaining in the 2019 Conference Account was transferred to the BASS Account before the bill for \$15,625.00 was paid.

Table 1. ELD Operating Account, FY 2019 (October 1, 2018 - September 30, 2019)

	Credits	Debits	Balance
Beginning Balance	\$ 213.00		\$213.00
Ending Balance		\$213.00	\$ 0.00

Continued on next page...

Committee Annual Reports *(continued)*

Table 2. ELD BASS Account, FY 2019 (October 1, 2018 - September 30, 2019)

*Transferred from Conference Account

	Credits	Debits	Balance
Beginning Balance			\$14,939.45
Dues Revenue	\$ 1,055.00		
Interest Revenue	\$ 117.95		
Conference Net Income*	\$ 9,979.91		
FY19 PIC/BASS special funding ELD	\$ 500.00		
ASTM Bernhardt Sponsorship	\$ 1,000.00		
Award Expenses		\$ 239.53	
ELD-FY19 Conference AV & Meals		\$ 15,625.00	
ASEE Administrative Fee		\$ 318.00	
Totals	\$ 12,657.86	\$ 16,182.53	
Net Gain (Loss)			\$ (3,524.67)
Ending Balance			\$ 11,414.78

Table 3. ELD Conference Account, FY 2018 (October 1, 2017 - September 30, 2018)

	Credits	Debits	Balance
Beginning Balance			\$ 0.00
Sponsorship (including stipends)	\$ 35,775.00		
Banquet Expenses		\$ 25,795.09	
Totals	\$ 35,775.00	\$ 25,795.09	
Net Gain (Loss)			\$ 9,979.91
Ending Balance			\$ 9,979.91*

*Transferred to BASS account

Continued on next page...

Committee Annual Reports *(continued)*

Table 4. ELD BASS Account, FY 1997-2019, Cumulative Surplus/Deficit

	Surplus (Deficit)	Cumulative Surplus (Deficit)
1997	n/a	\$7,395
1998	\$950	\$8,345
1999	(\$382)	\$7,963
2000	\$1,504	\$9,467
2001	\$1,043	\$10,510
2002	(\$2,106)	\$8,405
2003	\$1,700	\$10,104
2004	\$552	\$10,657
2005	\$65	\$10,749
2006	\$92	\$10,749
2007	(\$862)	\$9,887
2008	(\$2,815)	\$7,072
2009	\$4,311	\$11,383
2010	\$2,336	\$13,719
2011	(\$1,667)	\$12,052
2012	\$3,309	\$18,744*
2013	(\$2,399)	\$16,345
2014	(\$551)	\$15,794
2015	(\$3,619)	\$12,175
2016	(\$4,700)	\$7,475**
2017	\$4,280	\$11,755
2018	\$3,072	\$ 14,827
2019	(\$3,525)	\$11,415

*Adjusted from June 2013 report

**Adjusted from FY 2016 Annual Report

Spotlight on Members

Welcome New Members!



Aman Kaur is the Community Health & Engineering Librarian at the University of Pennsylvania. She writes, "The majority of my time is spent being a traditional liaison librarian to the School of Engineering and Applied Science. Since I'm based in the Biomedical Library, I also have responsibilities within reference, student engagement, and community outreach with the health sciences communities both on and off campus. Related to my work within the health sciences, the Center for Public Health Initiatives appointed me to the academic role of Associate Fellow.

"I am also a Coordinator of Weekly Themed Wellness Walks, a campus-wide initiative that transforms wellness walks into informal learning and networking opportunities for students, staff, and faculty. Due to the COVID-19 pandemic, I am working on a team to transform this initiative into a virtual one."

Aman has been in her current position for a little over 2.5 years. Previously, she was the 2015 - 2017 Eugene Garfield Resident in Science Librarianship at Penn. She obtained a BS in Family and Consumer Sciences Education and Studies with a minor in Engineering Studies from Iowa State University, and a Master of Library and Information Science from Rutgers University. Last fall, Aman was named an [Alternative Voice by the American Library Association New Member Round Table](#).

Congratulations to Award-winning ELD-ers!

Kelly Durkin Ruth, Engineering Librarian at the US Naval Academy, has been named an **SLA James M. Matarazzo Rising Star** for 2020. This award recognizes early-career library/information professionals with up to 5 years of experience, who show exceptional promise of leadership and contribution to the Association and profession.

Her leadership roles include participating in SLA's Physics-Astronomy-Mathematics Division (PAM), where she currently serves as secretary, and serving as the chair of her library's research support team. This is her second early-career leadership recognition, after receiving an ATG Media Up & Comer award in 2017.



Zachary W. Painter, Engineering Librarian, Research and Teaching Support at Stanford University, is the 2020 **SLA George Mandel Memorial Award** winner.

According to the announcement, the award "honors the late George Mandel, a leader of SLA Aerospace efforts for years [who believed] that participating in professional organizations is important for an individual's growth and development."

Zac earned the award, as "a leader in the SLA Engineering community for years, serving as Treasurer currently (and for several years prior), as well as serving earlier as Fundraising Chair. He has been a guiding and proactive force this year, managing our funds transition to the Association. In the aerospace specific area, the Committee was impressed by Zac's support of the astrophysics and aeronautics disciplines at Stanford, including his well-organized library guides, as well as his unusual and meticulous guide for materials sciences resources related to the construction of aircraft."

Mentoring Committee Reminders

Conference Buddy Program



Are you new to the
Engineering Libraries Division?

Attending your first
ASEE Annual Conference?

Get paired up with an ELD Member
to show you the conference ropes.

Brought to you by the
ELD Mentoring Committee

Contact Bruce Neville
Email: bneville@library.tamu.edu



Friendly Paper Review Service



Would you like some feedback on a paper
you are planning to submit for publication?

Need help writing your paper?

Want to improve your chances of having
your manuscript accepted for publication?

Brought to you by the
ELD Mentoring Committee

Contact Kevin Drees, Chair
Email: kevin.drees@okstate.edu

